

Powering Linked Open Data Applications

With Fedora and Islandora CLAW

David Wilcox, DuraSpace
dwilcox@duraspace.org

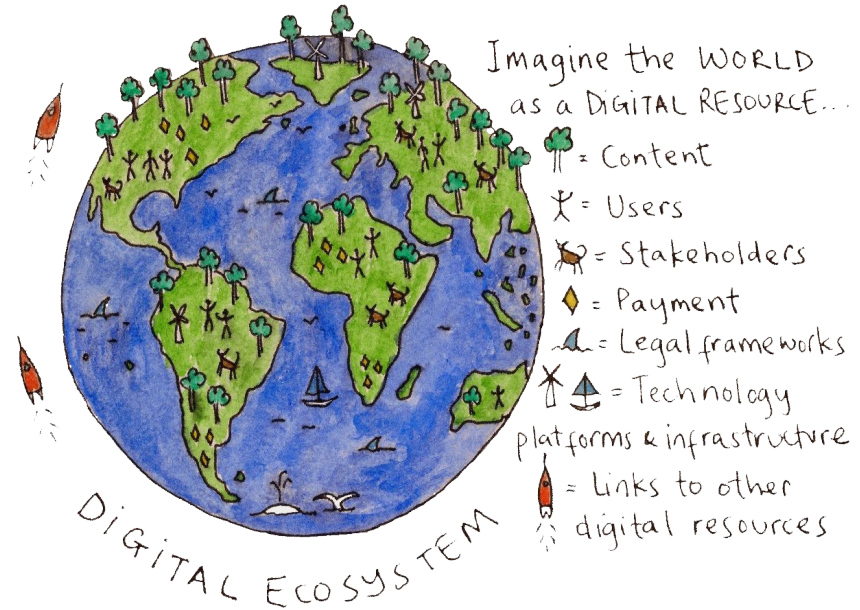


About DuraSpace

DuraSpace is not for profit organization that provides leadership and innovation for **open technologies**

We work to ensure that **current and future generations** have **durable and persistent access** to our **collective digital heritage**

Our **community** is part of an **interconnected, worldwide, scholarly ecosystem**



DURASPACE

DuraSpace open source projects



FedoraTM



Fedora...

Stores, preserves, and provides access to digital objects

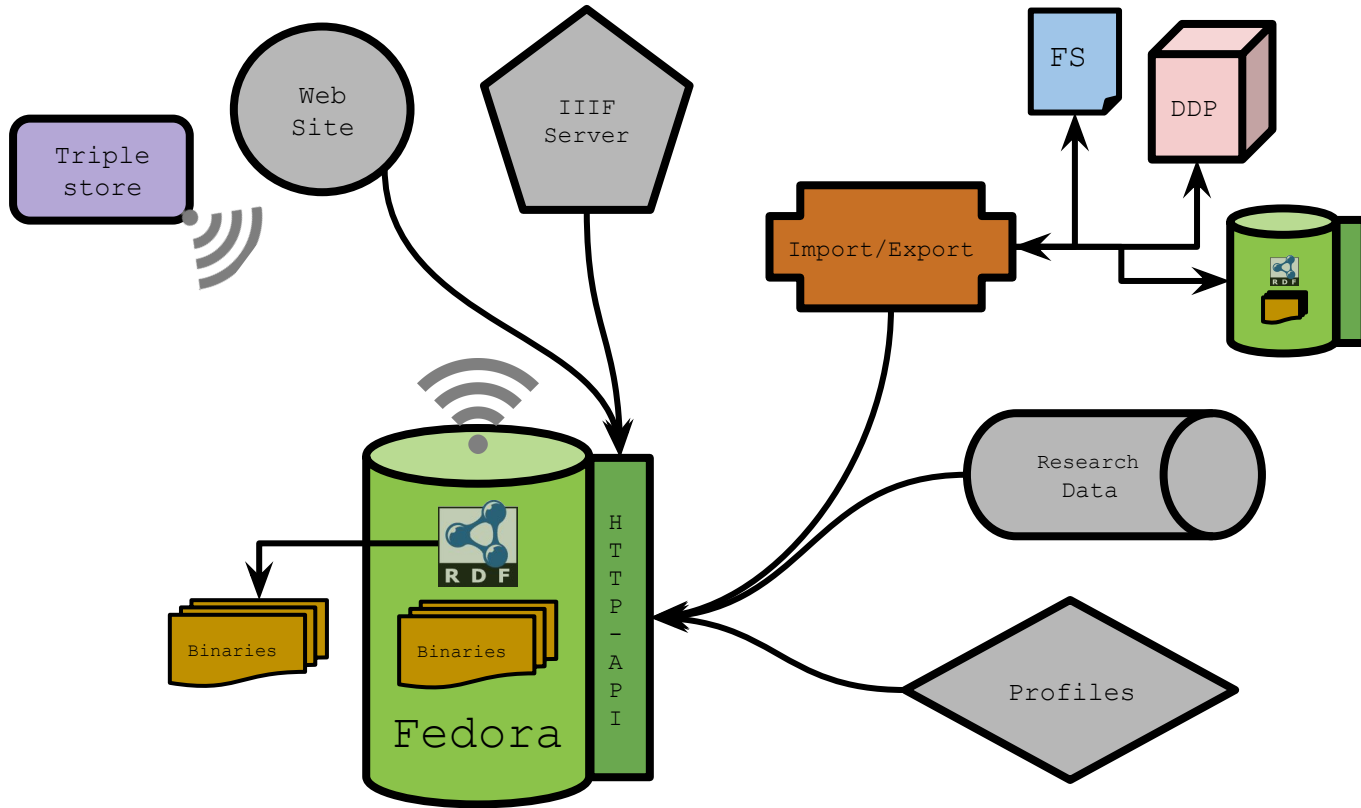
Supports flexible content models for objects

Supports semantic relationships between objects using RDF

Supports millions of objects, both large and small

Interoperates with other applications and services

Component of an Ecosystem



Sources: <https://www.w3.org/RDF/icons/>
<https://pixabay.com/en/icon-communication-sender-antenna-157359/>

Core Services and Standards

1. **Create/Read/Update/Delete** - Linked Data Platform
2. **Versioning** - Memento
3. **Authorization** - Web Access Control
4. **Fixity** - HTTP Headers
5. **Messaging** - Activity Streams 2.0

<https://fedora.info/spec>

Fedora API Specification and 5.0 Release

Proposed Recommendation for **API Specification 1.0** now available

Fedora 5.0 release candidate available for testing

Fedora 5.0 represents **alignment with the specification**

Release numbers now based on **semantic versioning**

External Component Integrations

Leverages the well-supported Apache Camel project

Camel is middleware for integration with external systems

Can handle any asynchronous, event-driven workflow



External - Indexing

Index repository content for search

Indexing is configurable - could be based on any property

Solr and Elasticsearch have been tested



elastic

External - Triplestore

An external triplestore can be used to index the RDF triples of Fedora resources

Any triplestore that supports SPARQL-update can be plugged in

Fuseki, RDF4J, and BlazeGraph have been tested



Islandora CLAW



Islandora is...

A collection of **Drupal modules** that enables you to, ingest, manage, and display objects stored in a **Fedora repository**.

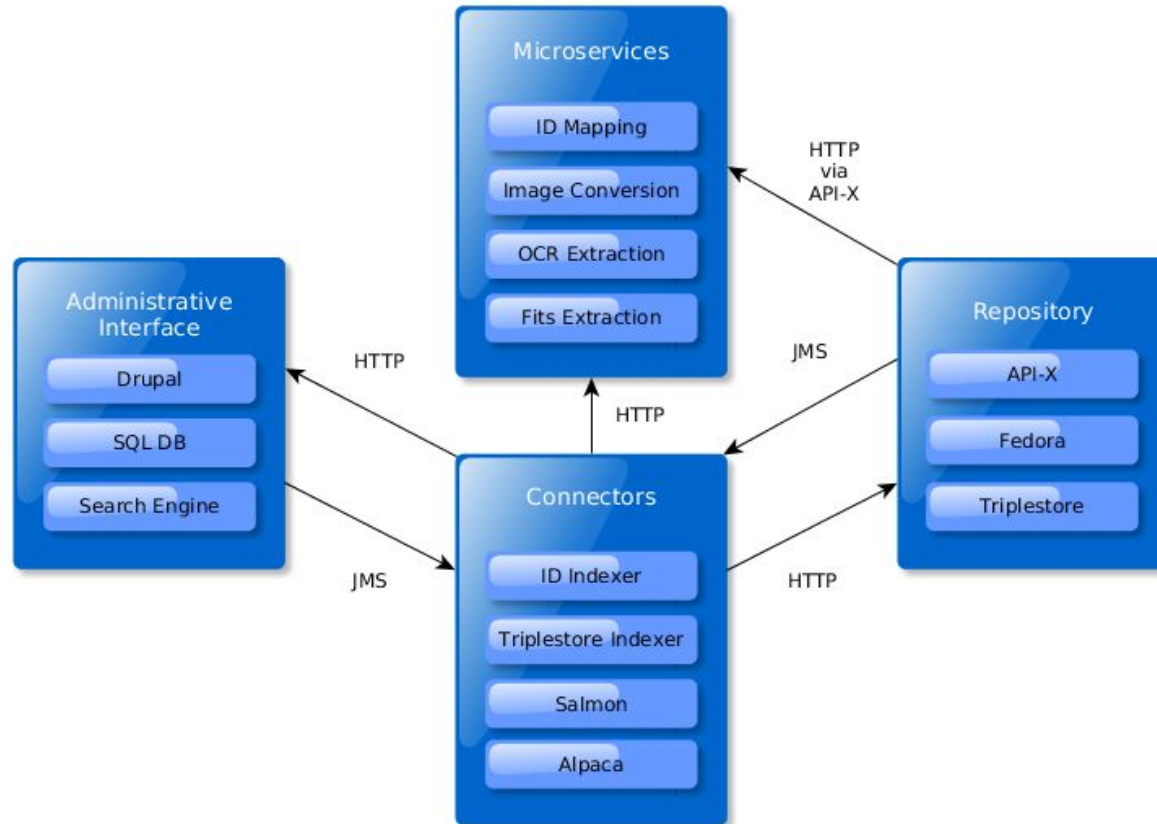
The ease and flexibility of **Drupal** on top of the robust storage of **Fedora**, with **Solr** for discovery.

What is Islandora CLAW?

- Drupal 8
- Solr
- Fedora 4+
- Modules
- Apache Camel
- Connectors
- Microservices
- YAML Configuration



CLAW Architecture



Islandora CLAW Use Case

Linked data modeling for humanities data at The Digital Scholarship Unit at the University of Toronto Scarborough Library

Dragoman Renaissance Research Platform

Collaboration with Prof. Natalie Rothman:
Dragomans, diplomatic interpreter-translators
ca. 1550-1750



Project Stages

1. ontology development
2. CLAW implementation
3. data migration, refinement
4. data analysis

Why Islandora CLAW?

Linked Data Application Platform

Existing skills and expertise

Leverage **content modelling** features

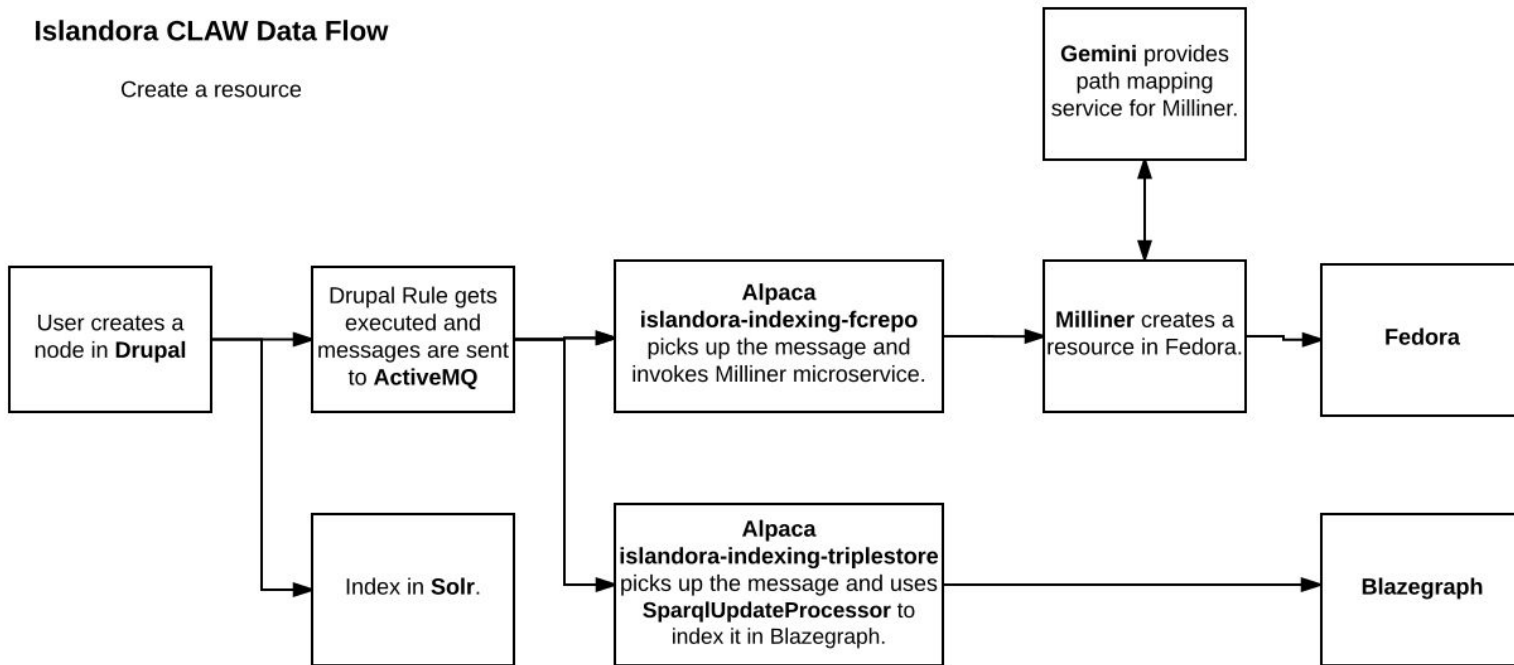
Leverage **flexible views and search** in Drupal

Experiment with different modules in **Drupal**

Islandora CLAW Architecture

Islandora CLAW Data Flow

Create a resource



Implementing in CLAW

Content Modeling based on ontology

Classes and Taxonomies into Content Types

Views to show related content

Search configuration for faceting

RDF Mapping

Inferences

Resource Structure

dragomans.digitalscholarship.utoronto.ca/node/3755

Aggiondrite, Zuanne election

Event Type
election

Description
Modoneo, was elected by Prov.r della Cefalonia as interprete della lingua g examine case and respond that supplicant doesn't seem to have v thorough impedirsi in altri che nella sola semplice interpretations riportandosi'

Source Person
Aggiondrite, Zuanne

Related People

Role
Parent

Person
Aggiondrite, Andrea

Notes
Father

Aggiondrite, Zuanne

Given Name
Aggiondrite

Family Name
Zuanne

Alternate Family Name
Aggiondrite
Aggiondriti
Aggiondrill
Aggiondriti
Aggiondrille

Underlying JSON-LD

```
1
  @id: "http://dragomans.digitalscholarship.utoronto.ca/node/37557_format=jsoid",
  @type: [
    "http://schema.org/Person"
  ],
  1,
  - dragomans:positionRelation: [
    - {
      @id: "http://dragomans.digitalscholarship.utoronto.ca/node/33237_format=jsoid"
    }
  ],
  1,
  - http://schema.org/event: [
    - {
      @id: "http://dragomans.digitalscholarship.utoronto.ca/node/23767_format=jsoid"
    },
    - {
      @id: "http://dragomans.digitalscholarship.utoronto.ca/node/23797_format=jsoid"
    }
  ],
  1,
  - http://schema.org/familyName: [
    - {
      @value: "Susanne",
      @type: "http://www.w3.org/2001/XMLSchema#string"
    }
  ],
  1,
  - http://schema.org/givenName: [
    - {
      @value: "Aggiondrite",
      @type: "http://www.w3.org/2001/XMLSchema#string"
    }
  ],
  1,
  - http://schema.org/inLanguage: [
    - {
      @id: "http://dragomans.digitalscholarship.utoronto.ca/node/1297_format=jsoid"
    }
  ],
  1,
  - dragomans:Parent: [
    - {
      @id: "http://dragomans.digitalscholarship.utoronto.ca/node/37547_format=jsoid"
    }
  ],
  1,
  - dragomans:personToPersonRelation: [
    - {
```


Next Steps

Interoperability with other linked data platforms (enrichment, expansion of data)

Add **flexible scholarship tools** that address needs of multiple projects

Speed up deployment of new projects on the platform without increasing staffing needs within the unit

Simplify on-ramping of researchers who may not be experts in linked-data

Supporting Islandora and Fedora



Fedora facts

Managed by DuraSpace (not-for-profit)

Funded by the **community**

Collaboratively developed by the **community**

Supported by 2 full-time staff members (not developers)



Islandora

230+ public sites, 1414 listserv members, 144 GitHub members, 28 Committers, 26 Contributed Modules, 29 Foundation members, 12 Interest Groups, 9 Community-led software releases, 19 Camps, 3 conferences, 2 major versions.

And 2 full-time employees. So **we need the Community.**

Useful Resources

Fedora documentation

<https://wiki.duraspace.org/display/FF/Documentation>

Fedora communication channels

<https://wiki.duraspace.org/display/FF/Mailing+Lists+etc>

Islandora CLAW

<https://github.com/Islandora-CLAW>