

The logo for the Harry Ransom Center, consisting of the letters 'HRC' in a white serif font inside a white square.

HARRY RANSOM
CENTER



新

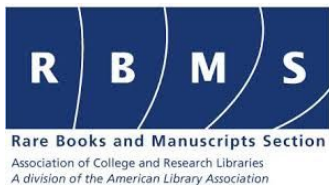


Cataloging Rare Books as Linked Data

Use Case at the Ransom Center

@SWIB20

November 25, 2020



Periodo

LIBRARY

LIBRARY
OF CONGRESS



Art & Architecture Thesaurus® Online



Rare Books and Manuscripts Section

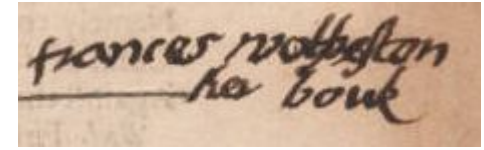
Association of College and Research Libraries
A division of the American Library Association





- Harry Ransom Center was founded in 1957 by Harry Hunt Ransom using a collection of rare books that had been acquired from private libraries over the years
- Library, archive, and museum
- Collections include nearly 1 million books, more than 42 million manuscripts, 5 million photographs, and 100,000 works of art.

Why Linked Data for Rare Books?



'Frances Wolfreston her bouk'
HRC PFORZ 896 PFZ

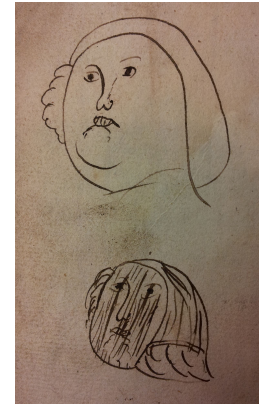
- HRC and other special collections libraries must rely on local fields and text strings to relay some of the most important data about the item

Format

443, [5], 445-500, [8] p. : music ; 17 cm (8vo)

Notes

· Signatures: A-2l⁸.



End page
doodle
Beinecke
Library
Osborn
Pb148

Local notes

2020 2 copy: Wanting gatherings 2G-2I. Early hand manuscript of psalms in Latin and English on front and back endpapers. On front endpaper: "July 1973 Given to Barbara by her husband Sheppard young Tyree, Jr.". Early hand manuscript annotations throughout. Letter to G.F. Hoar from A. R. Spofford. Early binding: full calf with tanned animal skin rebacking; front and back covers gilt stamped decorations with gold-tooled borders. Evidence of ties on front and back inner covers. Top edge gilt.

Story	User type	Functional need	Objective	Relevant entities (eg item-level fields like pagination, foliation, contributor...)
As a PhD student, I want to look at all embroidered bindings a library holds for my dissertation research	Graduate student/ researcher	Find all examples of embroidered bindings	item-specific binding information	genre, notes, items, binding

Story	User type	Functional need	Objective	Relevant entities
As a researcher, I am studying private libraries and how the books were used in the 17th century	Graduate student/ researcher	Find examples of annotations in early modern hand	Record the presence of annotations, autographs, and other item-specific markings	Custodial history, Markings

Modeling rare books descriptions (1)

```
:l1 a bf:Item;  
  arm:markedBy [  
    a arm:Marking;  
    rdf:value literal;  
    bf:contribution [  
      a bf:Contribution;  
      bf:agent URI;  
      bf:role URI;  
      edm:occurredAt [  
        a edm:TimeSpan;  
        bf:date literal  
      ].  
    ].  
  ].
```

Markings [590]

arm:Marking subclasses

Autograph, BindersTicket, Inscription, Label, Seal, Stamp, Watermark

Modeling rare books descriptions (2)

```
:l1 a bf:Item;
```

```
arm_ch:hasCustodialHistory [
```

```
  a arm_ch:CustodialHistory;
```

```
  dcterms:hasPart [
```

```
    a arm_ch:Ownership;
```

```
    bf:contribution [
```

```
      a bf:Contribution;
```

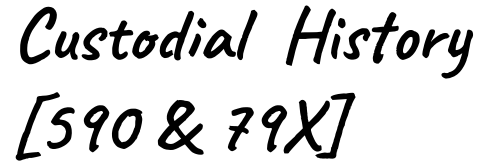
```
      bf:agent URI;
```

```
      bf:role URI
```

```
    ].
```

```
  ].
```

Custodial History
[590 & 79X]



arm_ch:CustodialEvent subclasses

Accessioning, Claim of ownership, Deaccessioning, Deposit, Destruction, Discarding, Donation, Inheritance, Loan, Loss, Offer, Ownership, Recovery, Repatriation, Sale, Theft, Transfer

Modeling rare books descriptions (3)

```
:l1 a bf:Item;  
dcterms:hasPart [
```

```
  a arm:Binding;  
  cidoc-crm:P2_has_type URI;  
  dcterms:hasPart URI;
```

```
  arm:hasPhysicalCondition [
```

```
    a arm:PhysicalCondition;  
    cidoc-crm:P2_has_type URI  
  ];
```

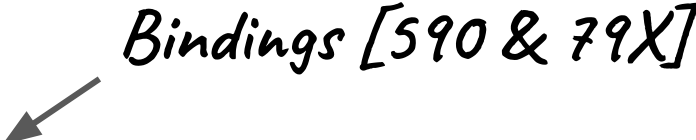
```
  bf:contribution [
```

```
    a bf:Contribution;  
    bf:agent URI;  
    bf:role URI
```

```
  ].
```

```
].
```

Bindings [590 & 79X]



Modeling rare books descriptions (4)

```
:l1 a bf:Instance;  
  bf:bookFormat [  
    a bf:BookFormat;  
    cidoc-crm:P2_has_type URI;  
    rdfs:label literal.  
  ].
```

Book Format [300]

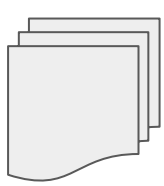


```
:l1 a bf:Instance;  
  arm:hasSignatureStatement [  
    a arm:SignatureStatement;  
    rdfs:label literal  
  ].
```

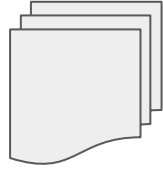
Signature statement [500]



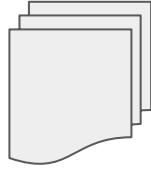
Local application profiles for rare books



LD4P BF2 Rare
Materials



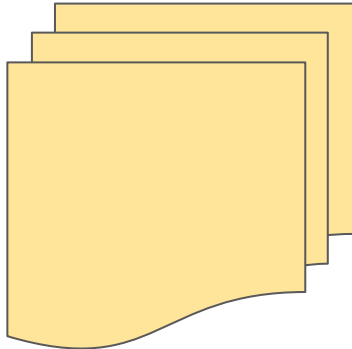
HRC ARM test



Yale ARM



Department working sessions
and cataloger's feedback



HRC Rare Materials Profiles

- ❖ HRC Rare Materials Work - `hrc:RT:bf2:RareMat:Work`
- ❖ HRC Rare Materials Instance - `hrc:RT:bf2:RareMat:Instance`
- ❖ HRC Rare Materials Item - `hrc:RT:bf2:RareMat:Item`
- ❖ HRC Bound-with - `hrc:RT:ARM:BoundWith`
- ❖ HRC Bound-with Item - `hrc:RT:ARM:BoundWith:Item`

Converting legacy data

- Testing programmatic data transformation
 - 19,149 graphs (Super Work, Expression Work, Instance, Item)
- Challenges for rare books

retrieving all printers

```
PREFIX bf: <http://id.loc.gov/ontologies/bibframe/>
PREFIX rdfs: <http://www.w3.org/2000/01/rdf-schema#>
select ?instance ?printer
  where{
    ?instance bf:instanceOf ?work .
      { ?work bf:contribution ?contributionid.
        { ?contributionid bf:agent ?isni.
          { ?isni rdfs:label ?printer. }
        ?contributionid bf:role ?roleid.
          { ?roleid rdfs:label ?rolelabel.
            FILTER (STRSTARTS(?rolelabel, "printer"))
          }
        }
      }
    }
```

- ❑ **No mappings for 590 and 79x fields**
- ❑ Contribution access points mapped to bf:Work domain (including printers and binders)
- ❑ Genre/Form terms mapped to bf:Work domain
- ❑ bf:selfmark values mapped straight from Library of Congress Call Number field

Training & Local Workflows

- Small cataloging team of only 3 - Head of Printed & Published Media, Metadata & Cataloging Librarian for Special Formats, and Cataloging Assistant
- Conceptual models & Literature reviews
- Weekly meetings to discuss cataloging questions or issues

- [Publication, Distribution, Manufacture, Production](#)
- [Copyright Date](#)
- [Series Statement](#)
- [Genre/Form](#)
- [Identifier for the manifestation \(BDA\)](#)
- [Notes](#)
- [Extent \(BF2\)](#)
- [Dimensions \(ARM\)](#)
- ✓ [Mode of issuance](#)
- ✓ [Media type](#)
- ✓ [Carrier type](#)
- [Book Format \(BF2\)](#)
- [Signature Statement \(ARM\)](#)
- [Bibliographic citation \(ARM\)](#)
- [Related Manifestation](#)
- [Has item](#)
- ✓ [Administrative Metadata](#)
- ✓ [Subclass of BIBFRAME Instance](#)

Book Format (BF2)

HRC Book Format (BF2) [+ Add another](#)

[+ Add Book Format](#)

[+ Add Notes](#) ⓘ

Signature Statement (ARM)

HRC Signature Statement (ARM) [+ Add another](#)

[+ Add Signature Statement](#)

[+ Add Notes](#) ⓘ

Bibliographic citation (ARM)

HRC Bibliographic Citation (ARM) [+ Add another](#)

[+ Add Standard Citation Form](#)

[+ Add structured citation entry](#)

[+ Add note](#)

[+ Add contained in \(Expression\)](#) ⓘ

Instance

Item

- [Shelfmark](#)
- [Location code](#)
- [Genre/form](#)
- [Contribution](#)
- [Named Collection](#)
- [Custodial history \(ARM\)](#)
- [Custodial history note](#)
- [Binding \(ARM\)](#)
- [Markings \(ARM\)](#)
- [Physical condition \(ARM\)](#)
- [Bibliographic citation \(ARM\)](#)
- [Dimensions \(ARM\)](#)
- [Enclosure \(ARM\)](#)
- [Digital surrogate](#)
- [Note](#)
- [Usage and access policy \(BF2\)](#)
- [Immediate source of acquisition \(BF2\)](#)
- ✓ [Administrative metadata](#)

Custodial history (ARM)

HRC Custodial History (ARM) [+ Add another](#)

[+ Add Custodial event](#) ⓘ

Custodial history note [↗](#)

Custodial history note

Binding (ARM)

HRC Binding (ARM) [+ Add another](#)

[+ Add description of binding](#)

[+ Add type](#)

[+ Add binding components](#) ⓘ

[+ Add base material](#) ⓘ

[+ Add applied material](#) ⓘ

[+ Add physical condition](#) ⓘ

[+ Add contribution](#)

[+ Add binder's ticket](#) ⓘ

Looking for sustainability and scalability

- Still experimentation phase at the Ransom Center, but...
- LD4P3 participation
 - BF2MARC conversion
 - Advocacy for Rare Books
 - Feedback to ARM
- Contributing to reusable RDF descriptions
 - PCC Wikidata pilot
- Local discovery tools
 - Testing wikibase

Many thanks!

Paloma Graciani Picardo

paloma.graciani@austin.utexas.edu

Brittney Washington

brittney.washington@austin.utexas.edu



HARRY RANSOM
CENTER