

MARC21 Bibliographic to LRM/RDA/RDF Mapping and Conversion Project

SWIB24

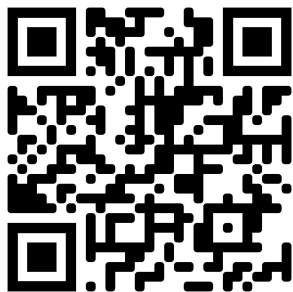
26 November 2024

Crystal Yragui, Cypress Payne, Junghae Lee
University of Washington Libraries

Outline

- Overview of the project
- Key discussions and decisions
- Sample transformation output
- Q & A

Overview of the Project



<https://github.com/uwlib-cams/MARC2RDA>

- Introduction
- Reasoning Behind the Project
- Project Roster
- Project Phase I Scope & Timeline
- Project Phase I Deliverables
- Project Phase I Workflow

Introduction

- Initiated in 2021 by the Linked Data Team of the Cataloging and Metadata Services Department at the University of Washington Libraries
- Designed to create a robust mapping from the MARC21 bibliographic format to RDA-RDF, along with a corresponding data conversion tool
- Aims to demonstrate that RDA data can be represented most accurately using the RDA ontology
- Aims to show how well LRM/RDA/RDF supports the user tasks
- Authority data is beyond the scope of this mapping

Reasoning Behind the Project

- MARC: record-based description
 - Not suitable for entity-based description
 - Describes everything in a single record
 - Too many text strings
- Modern metadata: entity based description
 - Entities: persons, corporate bodies, places, works, expressions, concepts, etc.
 - Describes relationships between entities
- RDA data can be represented most accurately using the RDA ontology
- MARC-to-RDA to be more complete and sustained for the future

Project Roster

- Laura Akerman (Emory University)
- Sita Bhagwandin (Royal Library of the Netherlands)
- Tynan Challenor (University of Washington)
- Doreen Chen (University of Washington)
- Gordon Dunsire (RSC, Former Chair)
- Deborah Fritz (TMQ, Former President)
- Cate Gerhart (University of Washington)
- Erin Grant (University of Washington, Project Supervisor)
- Sara Hruska (University of Washington)
- Ying-Hsiang Huang (University of Washington)
- Ebe Kartus (National Library of New Zealand)
- Jian Lee (University of Washington)
- Junghae Lee (University of Washington)
- Cypress Payne (University of Washington, Transformation Lead)
- Adam Schiff (University of Washington)
- Pengyan Sun (University of Washington)
- Crystal Yragui (University of Washington, Project Manager)
- Sofia Zapounidou (National Library of Greece)
- Past Members: Alice Chung, Theo Gerontakos, Melissa Morgan, Zhuo Pan, Benjamin Riesenberg

Project Phase I Scope & Timeline

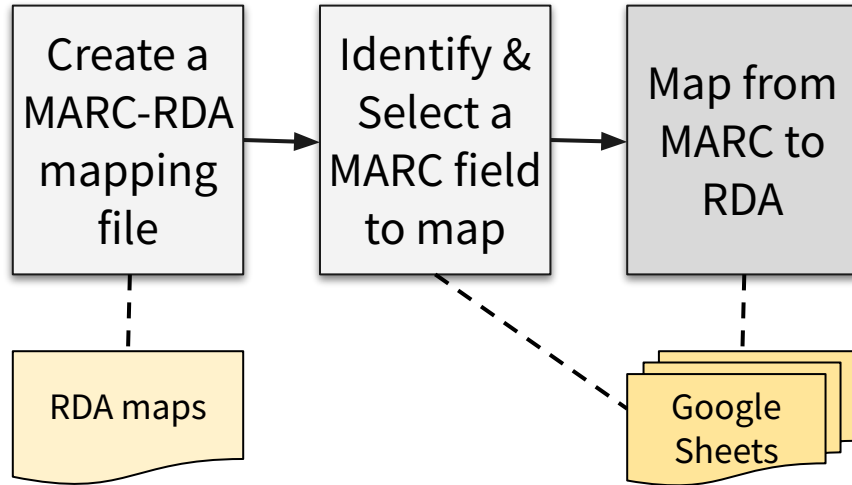
- Focuses on MARC21 fields considered core in the PCC Bibliographic Standard Record (BSR)
- Distinguishes between two groups of resources, prioritizing Group 1 resources
 - Group 1 resources: non-aggregates, augmentation aggregates
 - Group 2 resources: parallel aggregates, collection aggregates
- Exclusions from Phase I scope:
 - Diachronic works (continuing resources)
 - Group 2 resources
 - Entity reconciliation or deduplication
- Project Phase I timeline: End of 2024

Project Phase I: Deliverables

An official GitHub release of MARC-to-RDA Mapping Project, Phase I resources, featuring:

- Spreadsheets representing the mapping of MARC21 bibliographic data to LRM/RDA/RDF data
- Documentation to guide the use and interpretation of the mapping and transformation
- XSLT stylesheets containing the transformation code
- Sample datasets (MARC21 and LRM/RDA/RDF)
- Accompanying materials, such as additional vocabularies and metadata properties published by the UW Libraries

Project Phase I Workflow

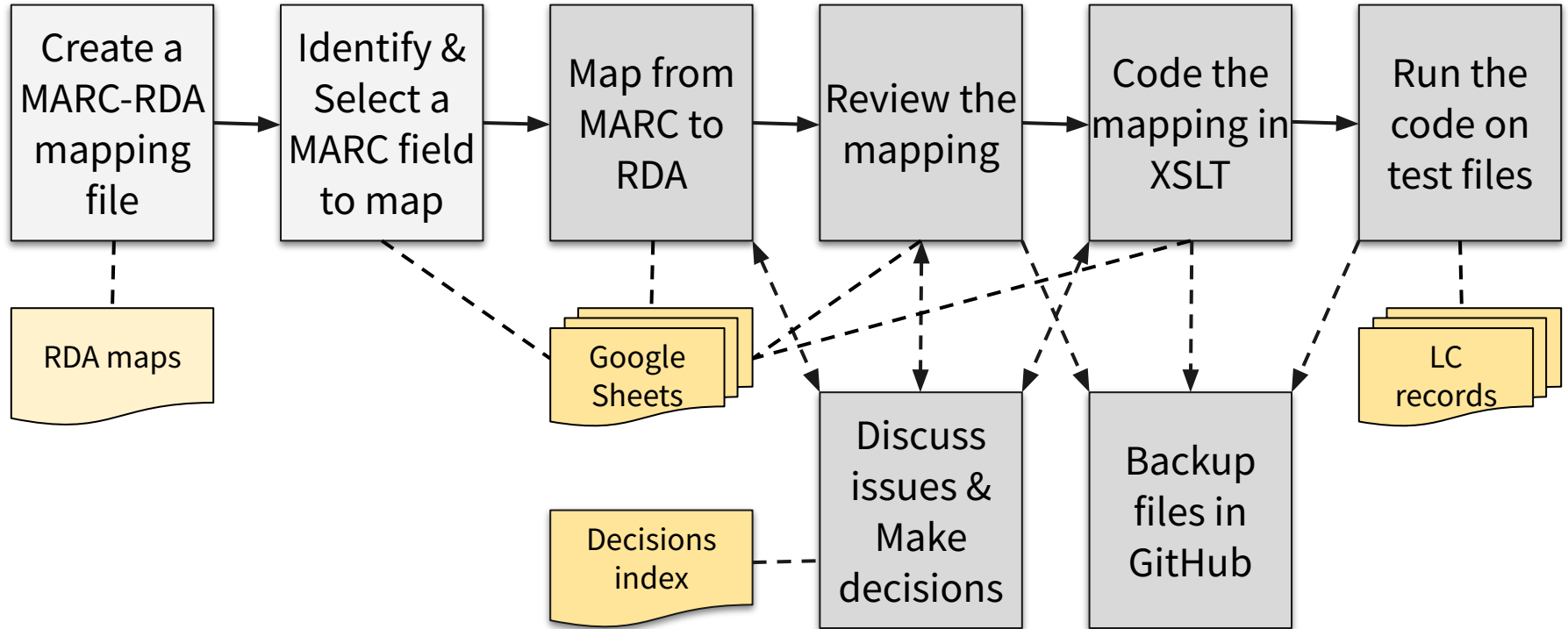


[RDA maps](#) (alignment from RDA properties to MARC 21 Bibliographic encodings) by the RDA/MARC21 Alignment Task Force within the RSC Technical Working Group

Mapping from MARC21 to RDA

Status	MARC Field	MARCFieldLabel	MARCInd2 Label	MARCInd2Value	MARCSubfield	MARCTag Condition1	Condition1Values	MARCTag Condition2	Condition2Values	RDA Registry URI	RDA Registry Label	Recording Method	Justification for Mapping	Transformation Notes	Problems with Mapping	Notes (Uncategorized)
done	650	SUBJECT ADDED ENTRY--TOPICAL TERM (R)	Thesaurus	*	\$1					http://rdaregistry.info/Element/s/w/P10256	has subject	IRI		<work> rdaw:P10256 <\$1>		coded - CP 2024-08-12
done	650	SUBJECT ADDED ENTRY--TOPICAL TERM (R)	Thesaurus	*	\$0		\$0 type is right and no \$1			http://rdaregistry.info/Element/s/w/P10256	has subject	IRI		<work> rdaw:P10256 <converted \$0>		coded for FAST - CP 2024-08-12
done	650	SUBJECT ADDED ENTRY--TOPICAL TERM (R)	Thesaurus	not 4	Sa, \$b, \$c, \$d, \$g, \$v, \$x, \$y, \$z	no \$1 \$0				http://rdaregistry.info/Element/s/w/P10256	has subject	structured description		<work> rdawo:P10256 <tConcept(field)> . // has subject; complete heading <tConcept(field)> skos:prefLabel "stripEndStop(concatenateOA(\$a, \$b, \$c, \$d, \$g, \$v, \$x, \$y, \$z))" <tConcept(field)> skos:inScheme <tScheme(2nd indicator or \$2)> . // has scheme of nomen 2nd indicator -- rdf.datatype -- Check decision I.I.K.	<work> rdawo:P10256 <tConcept(field)> . // has subject; complete heading <tConcept(field)> skos:prefLabel "stripEndStop(concatenateOA(\$a, \$b, \$c, \$d, \$g, \$v, \$x, \$y, \$z))" <tConcept(field)> skos:inScheme <tScheme(2nd indicator or \$2)> . // has scheme of nomen 2nd indicator -- rdf.datatype -- Check decision I.I.K.	coded - CP 2024-08-12
done	650	SUBJECT ADDED ENTRY--TOPICAL TERM (R)	Thesaurus	4	Sa, \$b, \$c, \$d, \$g, \$v, \$x, \$y, \$z	no \$1 \$0				https://www.rdaregistry.info/Elements/w/datatype/#P10256	has subject	structured description		<work> rdawd:P10256 "stripEndStop(concatenateOA(\$a, \$b, \$c, \$d, \$g, \$v, \$x, \$y, \$z))"		coded - CP 2024-08-12
done	650	SUBJECT ADDED ENTRY--TOPICAL TERM (R)	Thesaurus	not 4	Sv					https://www.rdaregistry.info/Elements/w/#P10004	has category of work	IRI		<work> rdaw:P10004 <tConcept(field)> . // has category of work <tConcept(field)> skos:prefLabel "Sv" . <tConcept(field)> skos:inScheme <tScheme(2nd indicator or \$2)>		coded - CP 2024-08-09
done	650	SUBJECT ADDED ENTRY--TOPICAL TERM (R)	Thesaurus	4	Sv					https://www.rdaregistry.info/Elements/w/datatype/#P10004	has category of work	unstructured description		<work> rdawd:P10004 "Sv"		coded - CP 2024-08-09
delete	650	SUBJECT ADDED ENTRY--TOPICAL TERM (R)	Thesaurus	7	Sx	no \$1 \$0		\$2	fast	https://www.rdaregistry.info/Elements/w/datatype/#P10256	has subject			<work> rdawd:P10256 "stripEndStop(\$x)" . <work> rdawd:P10256 <tConcept(field)> . <tConcept(field)> skos:prefLabel "stripEndStop(\$x)" . <tConcept(field)> skos:inScheme <tScheme(2nd indicator or \$2)>		
delete	650	SUBJECT ADDED ENTRY--TOPICAL TERM (R)	Thesaurus	7	Sy	no \$1 \$0		\$2	fast	https://www.rdaregistry.info/Elements/w/object/#P10322	has subject	timespan		<work> rdawo:P10322 <Timespan> <Timespan> rdatt:P70047 "stripEndStop(\$y)"		

Project Phase I Workflow (Cont'd)



Key Discussions and Decisions

- Aggregates
- Reproductions
- Subjects
- Related Entities
- Unconstrained Properties
- Wikibase Cloud

Aggregates

- Aggregate: Manifestation containing more than one expression
- Goals:
 - Separate Group 1 (augmentation aggregates, non-aggregates) and Group 2 (parallel aggregates, collection aggregates, diachronic works)
 - Mint entities for aggregate manifestations in “Group 1” which will honor RDA description standard and data model

This work has been led by Deborah Fritz

Aggregates

- Steps to Identify, Separate, and Describe Aggregates:
 - Comprehensively assess MARC21 bibliographic standard and cataloging practices
 - Record aggregate markers in MARC21 records in the form of pattern matching logic
 - Write pattern matching logic into transformation code and test the results
 - Include singleton expression and augmentation aggregate manifestations in Phase I dataset

This work has been led by Deborah Fritz

Reproductions

- Many MARC21 bibliographic fields may contain information about a reproduction or original manifestation or both, depending on the context of record creation
- RDA treats manifestations for originals and reproductions as separate, and teasing out descriptive metadata for two distinct entities from a record which mixes elements describing both in an inconsistent way was challenging

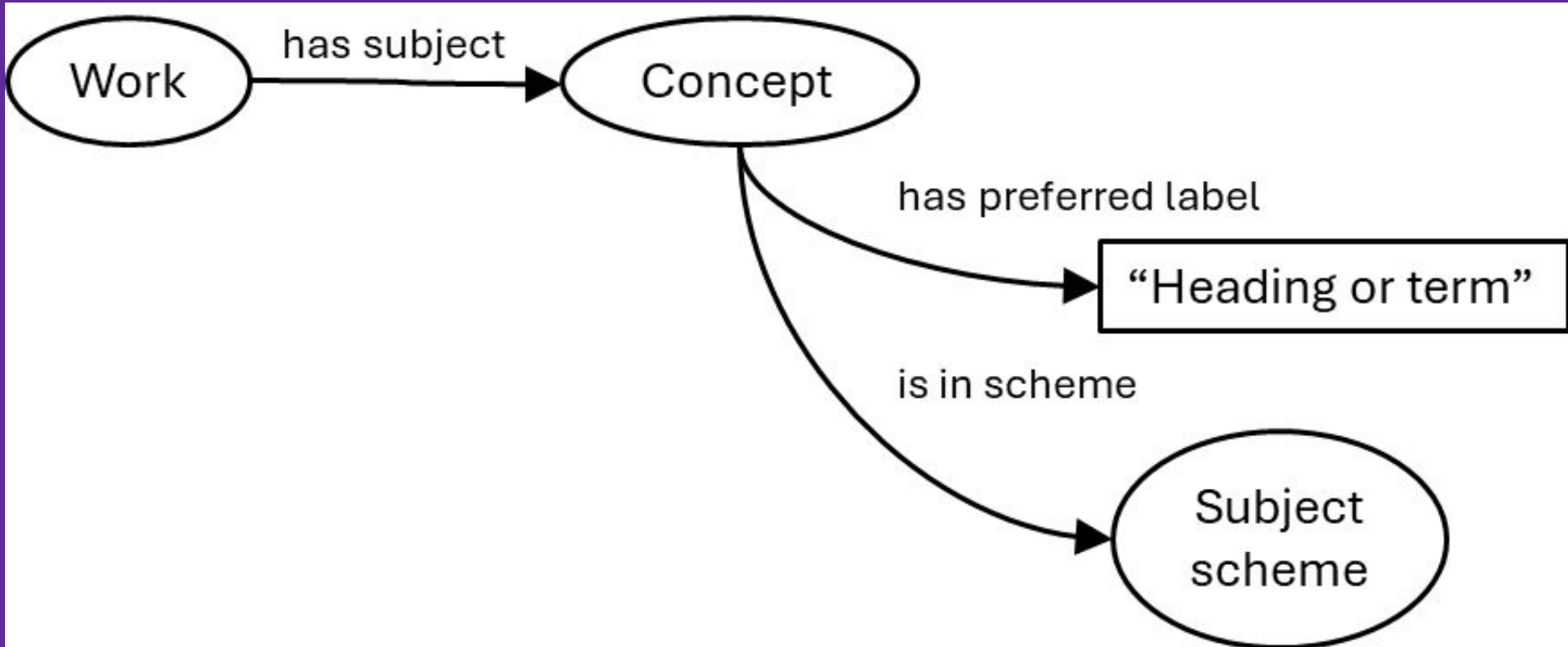
Reproductions

- Steps to Identify and Describe Original and Reproduction Manifestations:
 - Comprehensively assess MARC21 bibliographic standard and cataloging practices
 - Record conditions to determine whether a MARC record describes a reproduction
 - If reproduction conditions are met, provide field-by-field alternative mappings throughout the MARC21 bibliographic standard based on further contextual conditions to determine whether the data in the field describes the original manifestation, the reproduction, or both
 - Based on conditions, transformation mints appropriate entities

Subjects

- RDA Entities: Work, Expression, Manifestation, Item, Agent, Person, Collective Agent, Corporate Body, Family, Nomen, Place, Timespan
- Other concepts cannot be recorded as RDA Entities in RDA ontology
- Model for subject data: Reify concepts for subjects and classification numbers with sources as skos:Concepts
- The same is done for other concepts, such as genre/form terms

This work has been led by Gordon Dunsire, assisted by Pengyan Sun



Related Entities

- Relationships between entities in RDF are explicitly expressed in the form of triples
- In MARC21, most relationships are implicit and entities are not clearly identified
- 1XX, 7XX, 8XX fields indicate relationships between the main “WEMI Stack” entities or “Resource Entities” using relator terms (sometimes), and sometimes using properties. We wanted to fully express these using RDA/RDF as far as we could

Related Entities (Cont'd)

- Steps for Elaborating on Related Entities:
 - Create a table which could recognize which resource entity was the subject of the triple, which relationship should be the predicate of the triple, and what RDA expected the object of the triple ought to be
 - Write code to traverse the table and mint appropriate entities with the correct RDA relationships according to the MARC21 bibliographic descriptions
 - Test output
- Some MARC21 data could not be mapped to specific RDA properties, so needed to be mapped to less specific ones instead

Unconstrained Properties

- Unconstrained RDA properties are not well-formed RDA, and do not specify what entity belongs in the subject or object positions of the triple
- Mapping from these properties to constrained properties was impossible because the data pointing in the direction of which entities belong in the subject or object positions of the triples was not present
- We are not mapping unconstrained properties

Wikibase Cloud

- Needed a place to store output data: open, accessible, and editable by users
- National Library of Greece had used Wikibase Suite with success
- Lacked resources to host and maintain Wikibase Suite instance of this scope
- Wikibase Cloud offered a lightweight, hosted solution

Wikibase Cloud (Cont'd)

- UW student Ying-Hsiang Huang fieldwork project (supervised by Crystal Yragui):
 - Setting up Wikibase Cloud instance
 - Adapting code shared by Open Knowledge Greece
- Wikibase Cloud Instance will:
 - Have a complete reproduction of the RDA ontology
 - Ingest subset of transformed dataset
 - Facilitate user-friendly data viewing and manipulation
 - Have a SPARQL endpoint

Sample Transformation Output



<https://shorturl.at/olqZ2>

Input and Output

Visual Materials		Rec stat	c	Entered	20180209	Replaced	2											
Type	g	ELvl	Src	d	Audn	Ctrl	Lang	eng										
BLvl	m	Form	o	GPub	Time	0 6 7	MRec	Ctry	cau									
Desc	i	TMat	v	Tech	l	DtSt	p	Dates	2017 . 2017									
006		m	o	c														
007		c	#b	r	#d	c	#e	n	#fa									
007		v	#b	z	#d	c	#e	z	#fu	#gu	#h	z						
040		NJR	#b	eng	#e	rda	#c	NJR	#d	OCLCF	#d	WAU	#d	OCLCQ	#d	OCLCO	#d	OCLC
019		1032271494																
043		n-us--																
046		#k	2017	#2	edtf													
082	1	4	364	#q	OCoLC													
090		#b																
049		WAUW																
245	0	0	Healing justice / #c World Trust presents ; a film by Shakti Butler ; directed by Shak															
257			United States #2 naf															
264	1		[Oakland, Calif.] : #b World Trust Educational Services, Inc., #c [2017]															
264	4		#c ©2017															
300			1 online resource (1 video file (approximately 67 min.)) : #b sound, color															
336			two-dimensional moving image #b tdi #2 rdacontent															
337			computer #b c #2 rdamedia															
338			online resource #b cr #2 rdacarrier															

```

<http://marc2rda.edu/fake/99162251920901452wor> a <http://rdaregistry.info/Elements/c/C10001> ;
rdaw:P10004 <http://marc2rda.edu/fake/aat/con#documentaryfilm>,
<http://marc2rda.edu/fake/fast/con#documentaryfilms>,
<http://marc2rda.edu/fake/fast/con#featurefilms>,
<http://marc2rda.edu/fake/fast/con#internetvideos>,
<http://marc2rda.edu/fake/fast/con#nonfictionfilms>,
<http://marc2rda.edu/fake/lcft/con#documentaryfilms> ,
<http://marc2rda.edu/fake/lcft/con#featurefilms>,
<http://marc2rda.edu/fake/lcft/con#internetvideos>,
<http://marc2rda.edu/fake/lcft/con#nonfictionfilms>,
<http://marc2rda.edu/fake/rvmgf/con#documentaires>,
<http://marc2rda.edu/fake/rvmgf/con#filmsautresquedefiction>,
<http://marc2rda.edu/fake/rvmgf/con#vide%CC%81lossurinternet> ;
rdaw:P10222 <https://doi.org/10.6069/uwlsd.eje7-1q11#l> ;
rdaw:P10256 <http://marc2rda.edu/fake/fast/con#criminaljusticeadministrationof>,
<http://marc2rda.edu/fake/fast/con#prisonsandracerelations>,
<http://marc2rda.edu/fake/lcsh/con#criminaljusticeadministrationofunitedstates>,
<http://marc2rda.edu/fake/lcsh/con#prisonsandracerelationsunitedstates>,
<http://marc2rda.edu/fake/rvm/con#justicepe%CC%81naleadminestratione%CC%81tats-unis>,
<http://marc2rda.edu/fake/rvm/con#prisonsetrelationsracialese%CC%81tats-unis> ;
rdawd:P10002 "99162251920901452wor" ;
rdawd:P10088 "Healing justice" ;
rdawo:P10008 <http://marc2rda.edu/fake/99162251920901452age#d22e262> ;
rdawo:P10078 <http://marc2rda.edu/fake/99162251920901452exp> ;
rdawo:P10316 <http://marc2rda.edu/fake/naf/place#unitedstates> ;
rdawo:P10321 <http://id.loc.gov/vocabulary/geographicAreas/n-us>,
<https://id.oclc.org/worldcat/entity/E39PBJtxqOXWamiMiiwXRHara> ;
rdawo:P10415 <http://marc2rda.edu/fake/99162251920901452age#d22e288> ;
rdawo:P10418 <http://marc2rda.edu/fake/99162251920901452age#d22e280>,
<http://marc2rda.edu/fake/99162251920901452age#d22e288> ;
rdawo:P10422 <http://marc2rda.edu/fake/99162251920901452age#d22e280> .
<http://marc2rda.edu/fake/99162251920901452exp> a <http://rdaregistry.info/Elements/c/C10006> ;
rdae:P20006 <http://id.loc.gov/vocabulary/languages/eng> ;

```

Reproductions in MARC

340		#g polychrome #2 rdacc
340		#g color
380		Motion pictures #2 lcgft
511	0	Dance company, Embodiment Project ; film participants: Suijatha Baliga, James Bell, Denise Breton, Eric Butler, Fania Davis, Joy Degruy, Harley Eagle, George Galvis, Shawn Ginwright, Ericka Huggins, Morris Jenkins, David Kelly, Nicole Lee.
508		Editors, Sean Tambour Marshall, Peter Shwartz ; director of photography, Rick Butler ; music, Amikaeyla.
500		Originally produced as a motion picture in 2017.
520		Designed for dialogue, the film examines the school-to-prison pipeline, the need for comprehensive criminal justice reform, and highlights the importance of implementing restorative healing practices.
533		Electronic reproduction. #b New Brunswick, N.J. : #c Rutgers University Libraries Media Center, #d 2018. #n Reproduced from 4 3/4 in. videodisc (1092). #n Available via World Wide Web.
650	0	Criminal justice, Administration of #z United States .
650	0	Prisons and race relations #z United States .
650	6	Justice pénale #x Administration #z États-Unis. #0 (CaQQLa)201-0160838
650	6	Prisons et relations raciales #0 (CaQQLa)201-0062197 #z États-Unis. #0 (CaQQLa)201-0407727
650	7	Criminal justice, Administration of #2 fast #0 (OCoLC)fst00883246
650	7	Prisons and race relations #2 fast #0 (OCoLC)fst01077421
651	7	United States #2 fast #1 https://id.oclc.org/worldcat/entity/E39PBJxqQXMWqmiMijwXRHqrg #0 (OCoLC)fst01204155
655	7	documentary film. #2 aat #0 (CStmoGRI)aatgf300375156
655	7	Documentary films #2 fast #0 (OCoLC)fst01710390
655	7	Feature films #2 fast #0 (OCoLC)fst01710384
655	7	Internet videos #2 fast #0 (OCoLC)fst01750214
655	7	Nonfiction films #2 fast #0 (OCoLC)fst01710269
655	7	Internet videos , #2 lcgft
655	7	Documentary films , #2 lcgft

Original Manifestation in RDA

```
<http://marc2rda.edu/fake/99162251920901452origMan> a <http://rdaregistry.info/Elements/c/Manifestation> ;
rdamo:expressionManifested <http://marc2rda.edu/fake/99162251920901452exp> ;
F008 180209p20172017cau067 o vlang d
rdamo:placeOfManifestation <http://id.loc.gov/vocabulary/countries/cau> ;
rdam:carrierType <https://doi.org/10.6069/uwlswd.ggc0-9r48#v> ;
rdam:categoryOfManifestation <https://doi.org/10.6069/uwlswd.ggc0-9r48#v> ;
F245 00 $a Healing justice / $c World Trust presents ; a film by Shakti Butler ; directed by Shakti Butler and Rick Butler ;
producer, Shakti Butler ; World Trust Educational Services, Inc.
rdamd:titleProper "Healing justice" ;
rdamd:statementOfResponsibilityRelatingToTitleProper "World Trust Educational Services, Inc",
"World Trust presents",
"a film by Shakti Butler",
"directed by Shakti Butler and Rick Butler",
"producer, Shakti Butler" ;
F264 #1 $a [Oakland, Calif.] : $b World Trust Educational Services, Inc., $c [2017]",
rdamd:dateOfPublication "2017" ;
rdamd:nameOfPublisher "World Trust Educational Services, Inc." ;
rdamd:noteOnManifestation "Copyright notice date: ©2017." ;
rdamd:placeOfPublication "Oakland, Calif." ;
rdamd:publicationStatement "[Oakland, Calif.] : World Trust Educational Services, Inc., [2017]" ;
F264 #4 $c ©2017
rdamd:copyrightDate "2017" .
```

Reproduction Manifestation in RDA

```
<http://marc2rda.edu/fake/99162251920901452man> a <http://rdaregistry.info/Elements/c/Manifestation> ;
rdamo:expressionManifested <http://marc2rda.edu/fake/99162251920901452exp> ;
rdamo:electronicReproductionOfManifestationOf <http://marc2rda.edu/fake/99162251920901452origMan> ;
F006 m o c
F008 180209p20172017cau067 o vleng d
F338 ## $a online resource $b cr $2 rdacarrier
rdam:categoryOfManifestation <https://doi.org/10.6069/uwlswd.25z4-e963#m> ;
rdam:fileType <https://doi.org/10.6069/uwlswd.mkin-bp10#c> ;
rdam:carrierType <http://id.loc.gov/vocabulary/carriers/cr>,
<http://rdaregistry.info/termList/RDACarrierType/1018>,
<https://doi.org/10.6069/uwlswd.3d5s-zx23#o> ;
F245 00 $a Healing justice / $c World Trust presents ; a film by Shakti Butler ; directed by Shakti Butler and Rick
Butler ; producer, Shakti Butler ; World Trust Educational Services, Inc.
rdamd:titleProper "Healing justice" ;
rdamd:statementOfResponsibilityRelatingToTitleProper "World Trust Educational Services, Inc",
"World Trust presents",
"a film by Shakti Butler",
"directed by Shakti Butler and Rick Butler",
"producer, Shakti Butler" ;
F337 ## $a computer $b c $2 rdamedia
rdam:mediaType <http://id.loc.gov/vocabulary/mediaTypes/c> ;
```

Reproduction Manifestation in RDA (Cont.)

F340 ## \$g polychrome \$2 rdacc

rdam:colourContent <<http://rdaregistry.info/termList/RDAColourContent/1003>> ;

F340 ## \$g color

rdamd:colourContent "color" ;

F500 ## \$a Originally produced as a motion picture in 2017.

F508 ## \$a Editors, Sean Tambour Marshall, Peter Shwartz ; director of photography, Rick Butler ; music, Amikaeyla.

rdamd:noteOnManifestation "Available via World Wide Web.",

"Credits: Editors, Sean Tambour Marshall, Peter Shwartz ; director of photography, Rick Butler ; music, Amikaeyla.",

"Dance company, Embodiment Project ; film participants: Suijatha Baliga, James Bell, Denise Breton, Eric Butler, Fania

Davis, Joy Degruy, Harley Eagle, George Galvis, Shawn Ginwright, Ericka Huggins, Morris Jenkins, David Kelly, Nicole Lee.",

"Originally produced as a motion picture in 2017.",

"Reproduced from 4 3/4 in. videodisc (1092).";

F533 ## \$a Electronic reproduction. \$b New Brunswick, N.J. : \$c Rutgers University Libraries Media Center, \$d 2018. \$n

Reproduced from 4 3/4 in. videodisc (1092). \$n Available via World Wide Web.

rdamd:categoryOfManifestation "Electronic reproduction" ;

rdamd:dateOfManifestation "2018" ;

rdamd:nameOfAgentOfManifestation "Rutgers University Libraries Media Center" ;

rdamd:placeOfManifestation "New Brunswick, N.J." ;

F710 2# \$a World Trust (Organization), \$e presenter, \$e production company, \$e publisher.

rdamo:publisherCorporateBody <<http://marc2rda.edu/fake/99162251920901452age#d22e262>> .

Subjects in MARC

043		n-us---
650	0	Criminal justice, Administration of †z United States .
650	0	Prisons and race relations †z United States .
650	6	Justice pénale †x Administration †z États-Unis. †0 (CaQQLa)201-0160838
650	6	Prisons et relations raciales †0 (CaQQLa)201-0062197 †z États-Unis. †0 (CaQQLa)201-0407727
650	7	Criminal justice, Administration of †2 fast †0 (OCoLC)fst00883246
650	7	Prisons and race relations †2 fast †0 (OCoLC)fst01077421
651	7	United States †2 fast †1 https://id.oclc.org/worldcat/entity/E39PBJtxqQXMWqamiMijwXRHqrg †0 (OCoLC)fst01204155
655	7	documentary film. †2 aat †0 (CStmoGRI)aatgf300375156
655	7	Documentary films †2 fast †0 (OCoLC)fst01710390
655	7	Feature films †2 fast †0 (OCoLC)fst01710384
655	7	Internet videos †2 fast †0 (OCoLC)fst01750214
655	7	Nonfiction films †2 fast †0 (OCoLC)fst01710269
655	7	Internet videos . †2 lcgft
655	7	Documentary films . †2 lcgft

Subject Relationships to Work

<<http://marc2rda.edu/fake/99162251920901452wor>> a <<http://rdaregistry.info/Elements/c/Work>> ;

F043 ## \$a n-us---

F651 #7 \$a United States \$2 fast \$1 <https://id.oclc.org/worldcat/entity/E39PBJtxgQXMWqjmMjjwXRHgrq>
rdaw:subjectPlace <<http://id.loc.gov/vocabulary/geographicAreas/n-us>>,
<<https://id.oclc.org/worldcat/entity/E39PBJtxgQXMWqjmMjjwXRHgrq>> ;

F650 #7 \$a Criminal justice, Administration of \$2 fast

F650 #7 \$a Prisons and race relations \$2 fast

F650 #0 \$a Criminal justice, Administration of \$z United States.

F650 #0 \$a Prisons and race relations \$z United States.

F650 #6 \$a Justice pénale \$x Administration \$z États-Unis.

F650 #6 \$a Prisons et relations raciales \$z États-Unis.

rdaw:subject <<http://marc2rda.edu/fake/fast/con#criminaljusticeadministrationof>>,
<<http://marc2rda.edu/fake/fast/con#prisonsandracerelations>>,
<<http://marc2rda.edu/fake/lcsh/con#criminaljusticeadministrationofunitedstates>>,
<<http://marc2rda.edu/fake/lcsh/con#prisonsandracerelationsunitedstates>>,
<<http://marc2rda.edu/fake/rvm/con#justicepe%CC%81nleadministrati%CC%81tats-unis>>,
<<http://marc2rda.edu/fake/rvm/con#prisonsetrelationsraciales%CC%81tats-unis>> .

Subjects Reified as Concepts

F650 #7 \$a Criminal justice, Administration of \$2 fast

```
<http://marc2rda.edu/fake/fast/con#criminaljusticeadministrationof> a skos:Concept ;  
  skos:inScheme <http://id.loc.gov/vocabulary/subjectSchemes/fast> ;  
  skos:prefLabel "Criminal justice, Administration of" .
```

F650 #7 \$a Prisons and race relations \$2 fast

```
<http://marc2rda.edu/fake/fast/con#prisonsandracerelations> a skos:Concept ;  
  skos:inScheme <http://id.loc.gov/vocabulary/subjectSchemes/fast> ;  
  skos:prefLabel "Prisons and race relations" .
```

F650 #0 \$a Criminal justice, Administration of \$z United States.

```
<http://marc2rda.edu/fake/lcsh/con#criminaljusticeadministrationofunitedstates> a skos:Concept ;  
  skos:inScheme <https://id.loc.gov/vocabulary/subjectSchemes/lcsh> ;  
  skos:prefLabel "Criminal justice, Administration of--United States" .
```

F650 #0 \$a Prisons and race relations \$z United States.

```
<http://marc2rda.edu/fake/lcsh/con#prisonsandracerelationsunitedstates> a skos:Concept ;  
  skos:inScheme <https://id.loc.gov/vocabulary/subjectSchemes/lcsh> ;  
  skos:prefLabel "Prisons and race relations--United States" .
```


Related Entities in MARC

655	7	Documentary films , #2 lcft
655	7	Nonfiction films , #2 lcft
655	7	Feature films , #2 lcft
655	7	Vidéos sur Internet. #2 rvmgf #0 (CaQQLa)RVMGF-000001568
655	7	Documentaires. #2 rvmgf #0 (CaQQLa)RVMGF-000000017
655	7	Films autres que de fiction. #2 rvmgf #0 (CaQQLa)RVMGF-000000105
700	1	Butler, Shakti , #e film director, #e film producer.
700	1	Butler, Rick , #e film director, #e cinematographer.
710	2	World Trust (Organization) , #e presenter, #e production company, #e publisher.
758		#i has work: #a Healing justice (Motion picture : 2017) (MovingImage) #1 https://id.oclc.org/worldcat/entity/E39PCG6wF9HM33683rv9833w3P #4 https://id.oclc.org/worldcat/ontology/hasWork
856	4 0	#u https://stream.libraries.rutgers.edu/commercial/healing_justice.mp4

Related Entities in RDA

<<http://marc2rda.edu/fake/99162251920901452wor>> a <<http://rdaregistry.info/Elements/c/Work>> ;
F700 1# \$a Butler, Shakti, \$e film director, \$e film producer.
F700 1# \$a Butler, Rick, \$e film director, \$e cinematographer.
rdawo:directorPersonOfPhotography.en <<http://marc2rda.edu/fake/99162251920901452age#d22e288>> ;
rdawo:filmDirectorPerson.en <<http://marc2rda.edu/fake/99162251920901452age#d22e280>>,
 <<http://marc2rda.edu/fake/99162251920901452age#d22e288>> ;
rdawo:filmProducerPerson.en <<http://marc2rda.edu/fake/99162251920901452age#d22e280>> ;
F710 2# \$a World Trust (Organization), \$e presenter, \$e production company, \$e publisher.
rdawo:productionCompany.en <<http://marc2rda.edu/fake/99162251920901452age#d22e262>> ;

<<http://marc2rda.edu/fake/99162251920901452man>> a <<http://rdaregistry.info/Elements/c/Manifestation>> ;
F710 2# \$a World Trust (Organization), \$e presenter, \$e production company, \$e publisher.
rdamo:publisherCorporateBody.en <<http://marc2rda.edu/fake/99162251920901452age#d22e262>> .

Related Entities in RDA (Cont.)

F700 1# \$a Butler, Shakti, \$e film director, \$e film producer.

```
<http://marc2rda.edu/fake/99162251920901452age#d22e280 > a <http://rdaregistry.info/Elements/c/Person.en > ;  
  rdaad:accessPointForPerson.en "Butler, Shakti" .
```

F700 1# \$a Butler, Rick, \$e film director, \$e cinematographer.

```
<http://marc2rda.edu/fake/99162251920901452age#d22e288 > a <http://rdaregistry.info/Elements/c/Person.en > ;  
  rdaad:accessPointForPerson.en "Butler, Rick" .
```

F710 2# \$a World Trust (Organization), \$e presenter, \$e production company, \$e publisher.

```
<http://marc2rda.edu/fake/99162251920901452age#d22e262 > a <http://rdaregistry.info/Elements/c/CorporateBody.en >  
;  
  rdaad:accessPointForCorporateBody.en "World Trust (Organization)" .
```

Q & A



<https://github.com/uwlib-cams/MARC2RDA>